



THE GOLDEN GAIT

Vol. 41, No.8

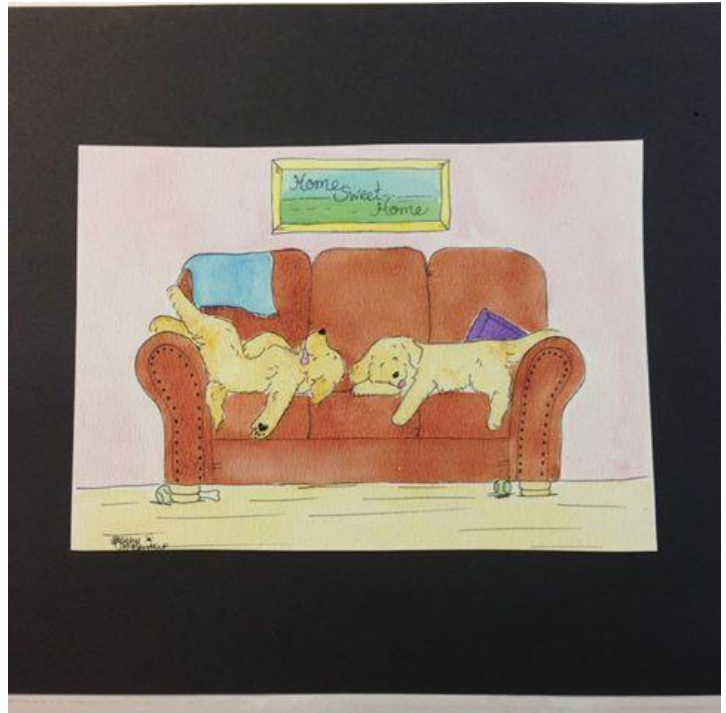
August 2015

MARK YOUR CALENDAR

Board Meeting	August 13
General Meeting	August 20
GRCA National Specialty	Sep 26 – Oct 4

INSIDE THIS ISSUE

New Titles and Awards
Tumeric Root – cancer prevention in dogs
Does linebreeding (and inbreeding) really flush out faults and concentrate virtues?



Mark these dates on your calendar:

2015 Board Mtg. Dates

September 10
October 8
November 12

2015 General Mtg Dates

September 17
October 15
November 19



New Titles and Awards

Novice Fast, NF

Hillock's Hot on the Trail
"Watson"
Owned by Tammy Tomlinson

Novice Agility Junner, NAI

Hillock's Hot on the Trail
"Watson"
Owned by Tammy Tomlinson

Open Agility, OA

Hillock's Hot on the Trail
"Watson"
Owned by Tammy Tomlinson

Junior Hunter, IH

Hillock's Jack Daniels
"Daniel"
Owned by Tammy Tomlinson & Jim Cohen

Rally Excellent, RE

Ch Brianne's Luminous Gold Masterpiece, BN, CGC
"Gibbs"
Owned by Melissa & Mike Jarvis

Rally Novice, RN

JR's Golden Angels Light the Lamp, CGC
"Kolsch"
Owned by Jenny Resendez & Melissa Jarvis

NOTE:

Our new accomplishment recorder is Cheryl Lauer.

Please send your information on new awards and titles to her. You should include a copy of your award certification from AKC (or other granting group), the dog's full registered name, the dogs call name, full name of the owners and co-owners, and of course, the new title!

CHERYLLAUER3@GMAIL.COM
724-728-0406

Tumeric Root (curcumin) - cancer prevention for dogs

1/4 tsp per 10 pounds of body weight of organic turmeric root
add coconut, olive or fish oil (coconut oil: 1/2 tsp per 10 pounds of body weight)
add freshly ground peppercorns -a pinch
divide the dosage and space evenly three times throughout the day.

Adding a 1/4 tsp per 10 pounds of body weight of organic turmeric root to your pet's diet will not only help stop cancer from knocking at their door but it will also aid in strengthening their immune system!

If using Curcumin Powder:

"To ensure a steady supply of curcumin in the bloodstream, divide the dosage and space evenly three times throughout the day.

While the exact dosing has not been determined in dogs, studies have used curcumin in doses ranging from 500 to 3600 mg per day." –Veterinarian Immunologist, Dr. Jean Dodds & Diana Laverdure

But there are challenges when giving just plain turmeric root powder or even curcumin powder to your pet.

First, turmeric root or curcumin are poorly absorbed across the G.I. tract and they are rapidly cleared from the blood. To better the absorption when using a high-quality curcumin or organic turmeric root source, give in conjunction with a fatty food such as coconut, olive or fish oil (coconut oil: 1/2 tsp per 10 pounds of body weight).

According to Australian Vet, Dr. Doug English, by adding freshly ground peppercorns (piperine) to your mixture of turmeric root and selection of fat, piperine will increase intestinal absorption allowing time for the curcumin to be taken up into the blood stream. You don't need more than a pinch!

For fresh root conversion -<http://ow.ly/LmELH>

Turmeric is amazing. I feed it to my dogs with coconut oil and black pepper for better absorption.

How much do you feed to your dogs?

About a teaspoon of turmeric (have read 1/4 t per 10 lbs), Tablespoon of coconut oil and several grinds of black pepper from the grinder. There's a Facebook group which also has a recipe for a mix ahead Golden paste but I haven't done that yet Some recommend starting gradually to avoid tummy distress but mine had no problem.

Planet Paws with Maria Acosta

"A groundbreaking new study (<http://ow.ly/Lml6Y>) published in the journal Anticancer Research reveals that one of the world's most extensively researched and promising natural compounds for cancer treatment: the primary polyphenol in the ancient spice turmeric known as curcumin, has the ability to selectively target cancer stem cells, which are at the root of cancer malignancy, while having little to no toxicity on normal stem cells, which are essential for tissue regeneration and longevity." – GreenMedInfo.com

This mean that unlike chemotherapy, which will destroy regular healthy cells, curcumin will only go after cancer cells in you and your pets!

It is estimated that over 6 million (and growing) dogs die from cancer each year! More than 1 in 2 dogs and 1 in 3 cats are diagnosed with cancer.

If you ask me, this is the most important herb in the world to add to your pet's diet.

This is the most thoroughly researched herb in existence today! Turmeric, and the component inside called curcumin, turns the entire drug-based medical model on its head by possessing hundreds of potential benefits. It has been observed to positively moderate over 160 different physiological pathways in the mammalian body.

Examples of curcumin's power:

- Alters DNA methylation
- Anti-angiogenic properties
- Antioxidant properties
- Antitumor properties
- Boosts the immune system
- Decreases cell growth
- Decreases metastasis
- Induces cancer cell Apoptosis
- Inhibits cancer cell division and growth
- Inhibits enzymes that aid in the spread of cancer

If using Turmeric Root Powder:

Adding a 1/4 tsp per 10 pounds of body weight of organic turmeric root to your pet's diet will not only help stop cancer from knocking at their door but it will also aid in strengthening their immune system!

If using Curcumin Powder:

"To ensure a steady supply of curcumin in the bloodstream, divide the dosage and space evenly three times throughout the day. While the exact dosing has not been determined in dogs, studies have used curcumin in doses ranging from 500 to 3600 mg per day." -Veterinarian Immunologist, Dr. Jean Dodds & Diana Laverdure

It is estimated that 5% of cancer is genetic and 95% is a result of lifestyle and environmental factors. When pet owners know better, they will only do better!
Pet Nutrition Blogger-Rodney Habib

Want more? Check out-<http://ow.ly/LmyRn>

For more info on what curcumin can do for you (human), check out -

<https://www.facebook.com/LiseRHN/posts/751708658278972:0>

Video on the effects of curcumin -<https://www.youtube.com/watch?v=7KQE9bAYig4>

DOES LINEBREEDING (AND INBREEDING) REALLY FLUSH OUT FAULTS AND CONCENTRATE VIRTUES?

One of the most common pieces of advice given to new and experienced dog breeders is to linebreed their dogs. The reason this advice – which is about 150 years old and is a holdover from the livestock breeding strategies of the Industrial Revolution – has survived is that linebreeding, over time, creates a situation where your breedings will be more predictable.

Imagine that you are pulling from a giant jar of M&Ms. The jar is opaque; what you have grabbed will not be seen until you've pulled your hand out. You HATE the green ones and you're not too fond of light brown. You really want the red ones and you're neutral about yellow. Your first handful brings up a whole bunch of reds, some yellows, a few light browns, and one green.

From here you have a choice – you can either go back in for your next handful, or you can put the handful you already pulled out into a second jar. That second one is a magic jar, and it'll instantly fill up with thousands of M&Ms, but they'll be in the exact proportion of colors that you put in.

This is not a trick question – OBVIOUSLY, to get closer to what you want, you choose the second jar. Once the second jar fills, almost every handful you pull out will be pleasing to you. Sometimes, by accident of chance, you'll get a lot of greens and light browns, but on the whole you've created a great way to get the M&Ms you want.

This is exactly the way it works in dogs. By starting with something you like, and then creating many more dogs closely related to the thing you like, you are stacking the odds in your favor.

The things that are very important to you – heaviness of bone, pretty head, or fill in a hundred other traits – will be statistically more likely to appear in a linebreeding, and over time this will lead to the creation of a "Line." We all talk about "line" to mean a pedigree, which is fine and works in a pinch, but the truest definition of a line of dogs is a group of dogs related over multiple generations that is incredibly similar and predictable.

This point – where you have the happy M&M jar – is usually where the explanation stops. Of COURSE every breeder would want to do this, and so OF COURSE it's the best way to breed.

However, what is not communicated – often because it's misunderstood, because those passing along the advice don't really understand it and are just passing along advice THEY heard, and back it goes for generations of breeders – is that the M&Ms are not coming by themselves.

Picture that each M&M is attached to a string of invisible mardi gras beads. You have fifteen small pieces of candy in your hand, and dripping between your fingers are fifteen yards of beads. That means when you put your handful of M&Ms in the new jar, you're not just putting candy in – in fact, most of the jar is not going to be candy. It'll be a big tangle of mardi gras beads with some candy attached to it.

Those invisible mardi gras beads are all the things that make up the invisible dog under the dog that you see and touch. They are the immune system, the emotional response system, circulatory, nervous, lymph, muscle development, bone growth rates, hormonal secretion, digestive... it goes on and on. And, of course, when you make your M&M color more alike, and more to your liking, you're also making the bead strings more alike.

But – and here's where the problem comes – you can't see those beads when you're making your choice between jar one and jar two. So NOW which one do you choose?

But – but – you say “Linebreeding concentrates virtues and flushes out faults!” That's what we've heard, often from breeders advocating not just a moderate amount of linebreeding but of tightening and tightening as you go. You don't just stick with jar two; you put a few M&Ms, just exactly the colors you like, from jar two into jar three. And from jar three you pick not just the colors you like (because now they'll all be the colors you like) but the roundest and plumpest candies. Jar four, therefore, is all the right color AND very likely to be just the type of candy shell and just the consistency of chocolate you like. This is all GREAT, say the advocates of line breedings. And the very tightest of linebreedings is the best of all, because you have “concentrated virtues and flushed out faults.”

“Flush out faults” is a great example of people using words that sound good but are a disaster in real life. Flushing out genetic faults means **making faults appear**. So you have, for example, sister mom with no immune disorder, brother dad with no immune disorder, breed them together and you get three puppies with an immune disorder. This reveals (flushes out) an inheritable genetic disease in their familial lineage.

When breeders had no ability to outsource any kind of knowledge – in other words, 150 years ago – this could be useful. You'd then know that the family carried a inheritable immune disorder and you could stop breeding them, or breed them only to families whose breeders had done similar inbreedings and found that their families did not have that disorder. This practice was honed on cows, so the default answer was “eat them all.” You eat your failures, which are going to be the vast majority of your breedings.

Here's the big problem nowadays: *Now you have three puppies with an immune disorder.*

This is where the whole strategy breaks down, when it comes to dog breeding. Nobody is (or should be) keeping entire litters to adulthood, and nobody is killing puppies anymore. You can't make the problems you create disappear into the freezer. Those puppies go into pet homes and show homes, months and years before

any of the “flushing out” is going to take place. In effect, *you’ve given your pet homes the result of an experiment to see what bad stuff is in a family.*

And this is where we, as breeders, have to stare this in the face. Is it ethical to try to make disorders appear, when *we intend to put those disorders in homes?*

I’m going to leave you with that – and look for some wise remarks in the comments.



THANKS MARCY AND TEAM FOR
AN OUTSTANDING AGILITY
TRIAL!!!



Warm wishes and congratulations to our very own Melissa and Mike Jarvis on the birth of their son, Owen Michael on July 21st!



Golden Retriever Lifetime Study Heros and supporters – look what you can purchase to support the study from Jenny Ihlenburg McMurtrie...all kinds of goodies that are not only different, but truly Golden. Check it out at www.etsy.com/shop/3000strong



If you have any matters you would like the Board to consider, contact the President, John Osheka, at 412-977-3870.

Golden Retriever Club of America (GRCA)

All Golden lovers are encouraged to join our Parent Club, GRCA. The *GR News* is published bi-monthly by the GRCA and contains educational articles, provides a forum for issues of interest to Golden owners, highlights Golden accomplishments and contains correspondent columns from the Member Clubs across the country. Contact the Editor for more information.

GREATER PITTSBURGH GOLDEN RETRIEVER CLUB (GPGRC)

- Member club of the Golden retriever Club of America, Inc. (GRCA)
Master National Retriever Club (MNRC)
Pennsylvania Federation of Dog Clubs, Inc. (PFDC)
- Licensed by the American Kennel Club (AKC) for Conformation Shows and Obedience, Rally and Agility Trials and Hunt Tests.

General Membership Meeting is held the third Thursday of the month at 7:30 p.m.

Membership applications are available from the Membership Chairperson. Attendance at two Club functions (one being a General Membership Meeting) and endorsement of two Club Members is required before an application can be accepted. Dues are: Regular Membership (individual) - \$25.00, a second adult – an additional \$13.00. Associate Membership (individual) - \$15.00, a second adult – an additional \$8.00. Junior Membership - \$1.00. Completed applications and dues are to be submitted to the Membership Chair.

Newsletter is posted monthly on the Club's Website at www.gpgrc.org. Club members may request printed, mailed copies of the *Golden Gait* for a fee of \$20 per year. Litter advertisements are accepted from Club Members only on a space available basis. (Fees are full page - \$10; half page - \$5; quarter page - \$2.50.) Refer to the Puppy Referral Policy and Breeder Code of Ethics for required clearances.

In summary, puppy referral is a service provided to GPGRC Members only. (1) Both sire and dam must be two years of age or older at the time of breeding; (2) copies of eye clearances within one year of breeding must be supplied; and (3) an OFA numbers for hips and elbows must be submitted. Also hearts must be evaluated by an approved veterinary cardiologist.

Acceptance and use of the information provided by GPGRC constitutes an acknowledgment that the user hereby releases and indemnifies the GPGRC and its Officers, Directors, Members and Agents from any and all liability and damages sustained by the user as a result of any information obtained from this organization.

Title/Award Record Form should be filled out and sent to the Accomplishments Recorder for all Conformation, Obedience, Tracking, Agility, Rally, Field Events or Community Service Events before they can be reported in the Newsletter.

Monthly Meeting

The monthly meetings are held at the Sisters of Holy Family of Nazareth, 301 Bellevue Rd 15229. Meeting begins at 7:30 P.M. Guests are Welcome!

Directions from I-279: Take exit 12 toward US 19/Perrysville Ave. At Perrysville Avenue, turn left. Go approximately .8 mile and turn left onto Bellevue Road (Sunoco Station on corner). Go approximately .5 mile and turn right to stay on Bellevue Road. End at 301 Bellevue Road. Entrance to complex is one way. Sign will direct you to building. Yellow brick building behind large red brick building is the meeting place. There is an open parking lot or 2 deck parking garage available.

OFFICERS

President

John Osheka
1908 Aspen Court
Conway, PA 15027
412-977-3870

Vice-President

Kathy Fertal
909 Ruth Street
Pittsburgh, PA 15243
412-341-2459

Secretary

Roseanna Frankowski
55 Marlin Dr West
Pittsburgh, PA 15216
412-531 1424

Treasurer

Vicki Osheka
1908 Aspen Court
Conway, PA 15027
412-215-9314

DIRECTORS

Kris Tosadori
72 Kennedy Lane
McKees Rocks, PA 15136
412-331-6588

Marcy Kronz
407 Fairview Street
Pittsburgh, PA 15220
412-334-7187

Sally Dines
4120 Windfall Lane
Gibsonia, PA
724-584-3300

COMMITTEE CHAIRPERSONS

Accomplishment Recorder
Cheryl Lauer
Cheryllauer3@gmail.com
724-728-0406

Agility
Marcy Kronz
412-334-7187

AKC Liaison
Barbara Martin
724-348-5702

Community Services

Education
Roseanna Frankowski
412-531 1424

Equipment
Dian Hurka
724-947-1228

Field Training Day
John and Candy Verduce
412-741-1021

GRCA Delegate
Barbara Martin
724-348-5702

GRCA News Rep.
Candy Verduce
412-951-7577

GPGRC Webmaster
Julie Rihn

GRF Liaison

Historian
Grace West
412-341-6625

Hospitality
Anne Pittman
724-355-5106

Membership
Shirley Koper
412-771-1995

Merchandise
Rosanna Frankowski
412-531-1424

Newsletter
Sally Dines
sallydines4120@gmail.com
724-584-3300

Puppy Referral
Pat Depp
412-931-0590

Program

Rescue Liaison
John Osheka
412-977-3870

Specialty
Sally Dines
724-584-3300

Please email me pictures of your dogs which I can use in future issues. sallydines4120@gmail.com

GOLDEN GAIT - Greater Pittsburgh Golden Retriever Club, Inc.- Sally Dines, Editor



English Show Champion Susan of Westley (1945)